



GOBL™ Diesel particulate filter cartridge. Exchangesystem.

Collection brochure for the models
250, 300, 450, 900 and Workshopfilter.

GOBL™ particulate filter Cartridge system is made to be used on diesel-powered vehicles and diesel-powered equipment.

GOBL™ particulate filter Cartridge is used in environments where there are requirements on air, free from soot particles. The filter is easy to assemble, its operation is on a cost friendly level and easy to move between different vehicles.

The filter meets the regulatory requirements for particulate reduction. The sturdy container is made of stainless steel No 1.4301 and aluminum AlMgSi1 (EU quality assurance).

More than 97% of the soot is collected in the metal cartridge (similar to sintered metal), which at intervals must be replaced depending on operating conditions.

The number of operating hours depends on driving style, quality of fuels, engine condition.

Idling more than 2 minutes at the time is not recommended and diesel contents more than 10 ppm Sulphur might reduce the lifetime of the cartridge which normally last about/between 300-700 hours..

The lids that close the container are fitted with a quick-coupling which simplifies service and replacement of the filter cartridge.

GOBL™ particulate filter Cartridge is equipped with a pressure sensor that measures the pressure in the filter. When the filter is filled with soot indicator glows red at the same time with a warning signal will sound. Pressure guard is set to 145 mbar back pressure, unless otherwise agreed.

GOBL™ particulate filter Cartridge does not replace the existing muffler.

Reports: the corresponding expert reports are present.

Vert-Zertifikat: Prüf-Nr. B175/12.05.

Bafu/FOEN B175/12.05 Switzerland.

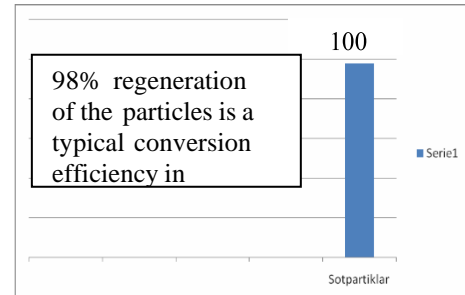
The provisions of TRGS 554 are met (Germany).

Listed at the British Cross Rail.

Meets the Swedish Environmental zones regulation for Construction machines.

Disposal of the used filter cartridge: Above-ground deposit of deposit category II (Deponielevel II).

- Tied into a plastic bag -



Standardmodel (model 300) for engines up to 85 kW or exhaustflow 1100 m³/h

The exhaust intake and exhaust outlet connections are flexible, can be customized (50, 90, 120 and even up to 220 mm). The axial boring on the aluminum flange is the exhaust intake. The flange, used to fasten a flexible tube or exhaust tubing, is included in delivery.

Specification.

Service life Cartridge;	> 400 hours, depending on the maintenance condition of the motor.
Scope of delivery;	Particulate filter including filter cartridges, pressure adjuster with cable, printed circuit board, LED and Ermeto tube, 2 retaining clips, silicon tube for condensation draining, connecting flange with gasket and screws.
Exhaust temperature:	Max.allowed 400°C in continuous operation.
Efficiency:	>98 reduction of particulate matter emissions.
Catalyst:	Option (Oxi- catalyst is not included in the delivery).

Modell 250;

Max exhaustflow 460 m³/h / appr. 35 kW.

Length:440 mm (490mm with connection flanges).

Diameter: 250 mm.

Height : 275mm.

Weight, 17 kg, (Cartridge 3,5 kg).

Modell 300;

Max exhaustflow 1100m³/h / appr.85 kW.

Lenght 740 mm (795 mm with connection flanges).

Diameter; 300 mm.

Height; 328 mm.

Weight; 32 kg,(Cartridge 10 kg).

Flanges; 50mm, 80mm, 90 mm, 110 mm



**Model 450-8;**

Maximum exhaust volume 2000 m³/hr /appr. 145 kW.

Dimension; 750 x 470 x 460 mm

Weight; 55 kg/ (Cartridge 17 kg).

Flanges: The model 450 contains three exhaust line of connection (flange) dimensions of **80, 90 or 110 mm**.

(by ordering , please, inform Physitron AB which dimension shall be used otherwise the filter with a 90 mm flange, will be send).





Model 900-12.

Maximum exhaust volume 2000 m³/hr /appr. 275 kW.

Dimension; 860x453x875 mm.

Weight: 120 Kg, incl.2 cartridges (2x17 Kg).

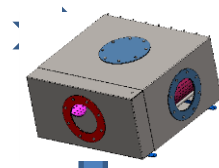
Max.exhausttemperature: 450 ° C.

The flange of the filter has for the exhaust entry and exit an inner dimension of maximal **214 mm**. Connection (flanges) will be customer-specific made and will meet the needs of the engine.

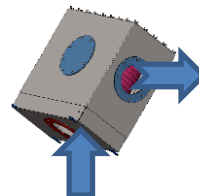
(By ordering, please inform Physitron AB which dimension the ingoing and outgoing flange shall have. Delivery will not be made without this information).

The 900 model can be set up independently of installation position; therefor the foot tabs are attached independently of installation position.

Notice by
ingoing flange



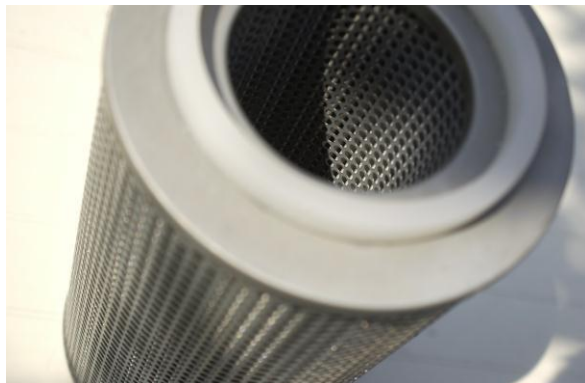
mounted and the outgoing
position of 90°.



mounting, the exhaust
must be axial or radial
must have opposite the



Cartridge/Exchange unit.



with 4-layer filter
long life cycle
non-flammable

Details of GOBL™ Particulate Filter performance characteristics

L = cubic capacity x r = max. RPM x F = factor x T = temperature x 60:2000 = exhaust volume

F = factor:	Suction motor	0.85
	Turbo	1.7
	Turbo/LLK	2.0

T = Particulate filter exhaust temperature	250°C	1.8
	300°C	2.0
	350°C	2.2

Accessories available upon request;

- Electric valve.
- Manual valve
- Flexible tube with glass fiber gasket.
- Exhaust exit-tube.
- Safety shield.
- Oxidation Catalyst.





Mobile Cartridge / workshopfilter,



Type 400480:

Particle filter for trucks running in and out of shops, factories, storage room, tunnels and the like. Must be connected directly to the exhaust tail pipe. See the various pipe connections for the exhaust pipe (42,60, 89 mm)



Type 400471;

Particle filter for vehicles driving in and out of shops, factories, storage room, tunnels and the like with extension. Choose which way you want to let out the exhaust. The hose is approximately 1 meter, 75 mm diameter , rubberconnection choose between 52-100 mm.



Type 300351.

Portable particulate filter with handle for engines up to 530 kW. Complete with battery-operated back pressure gauge and filter cartridge with inlet dimension 139 mm.



Manual or electrical - Controlled Valve.

Both the electrical and the manually-controlled Valve, can be ordered as an accessory to the **GOBL™** particulate filter. The valve is retrofittable.



**CO and HC
>92% @ 220 °C.**

**Option Catalyst for
oxidation**



